

**Structura organizatorica a Spitalului orasenesc Santul Dimitrie Tirgu Neamt
aprobata prin Ordinul MS nr. 793/2010, cu modificarile ulterioare**

SECTIA MEDICINA INTERNA	55 paturi	
din care:		
Compartiment gastroenterologie		10 paturi
Compartiment diabet zaharat, nutritie si boli metabolice		10 paturi
SECTIA OBSTETRICA-GINECOLOGIE	35 paturi	
din care:		
Compartiment ATI		5 paturi
Sala de operatii		
COMPARTIMENT NEONATOLOGIE	20 paturi	
din care:		
Terapie intensiva		5 paturi
SECTIA CHIRURGIE GENERALA	30 paturi	
din care:		
Compartiment ATI		5 paturi
Bloc operator		
SECTIA BOLI INFECTIOASE	25 paturi	
SECTIA CARDIOLOGIE	30 paturi	
SECTIA REUMATOLOGIE	25 paturi	
din care:		
Compartiment recuperare, medicina fizica si balneologie		5 paturi
SECTIA PEDIATRIE	40 paturi	
din care:		
Compartiment recuperare pediatrica		5 paturi
COMPARTIMENT PRIMIRE URGENTE (CPU)		
TOTAL	260 paturi	
INSOTITORI		5 paturi

UNITATE DE TRANSFUZII SANGUINE

FARMACIA

LABORATOR ANALIZE MEDICALE (*)

LABORATOR RADIOLOGIE SI IMAGISTICA MEDICALA (*)

LABORATOR RECUPERARE, MEDICINA FIZICA SI BALNEOLOGIE (BAZA DE TRATAMENT) (*)

COMPARTIMENT DE PREVENIRE SI CONTROL AL INFECTIILOR NOZOCOMIALE

COMPARTIMENT DE EVALUARE SI STATISTICA MEDICALA

CABINET DIABET ZAHARAT, NUTRITIE SI BOLI METABOLICE

CABINET BOLI INFECTIOASE

CABINET ONCOLOGIE MEDICALA

CABINET PLANIFICARE FAMILIALA

DISPENSAR TBC

FISIER-INFORMATII

AMBULATORIUL INTEGRAT AL SPITALULUI CU CABINETE IN SPECIALITATILE:

Medicina Interna

Cardiologie

Chirurgie generala

Obstetrica-ginecologie

Pediatrie

Reumatologie

Neurologie

Pneumologie

Endocrinologie

Gastroenterologie

Ortopedie si traumatologie

APARAT FUNCTIONAL

(*) Laboratoarele deservesc atat paturile cat si ambulatoriul

**Organizarea liniilor de garda in Spitalul orasenesc Santul Dimitrie Tirgu Neamt
aprobata prin adresa MS nr. OB 11115/42006/2004**

1 linie de garda in specialitatile medicale

1 linie de garda in specialitatile chirurgicale

1 linie de garda in specialitatea pediatrie

CONSILIUL DE ADMINISTRATIE

TOTAL posturi	Posturi cu finantare din transfer de la bugetul de stat	Posturi cu finantare din veniturile proorii
422	16	406

CONSILIUL LOCAL PRIMAR SPITALUL ORASENESC SFANTUL DIMITRIE TG.NEAMT

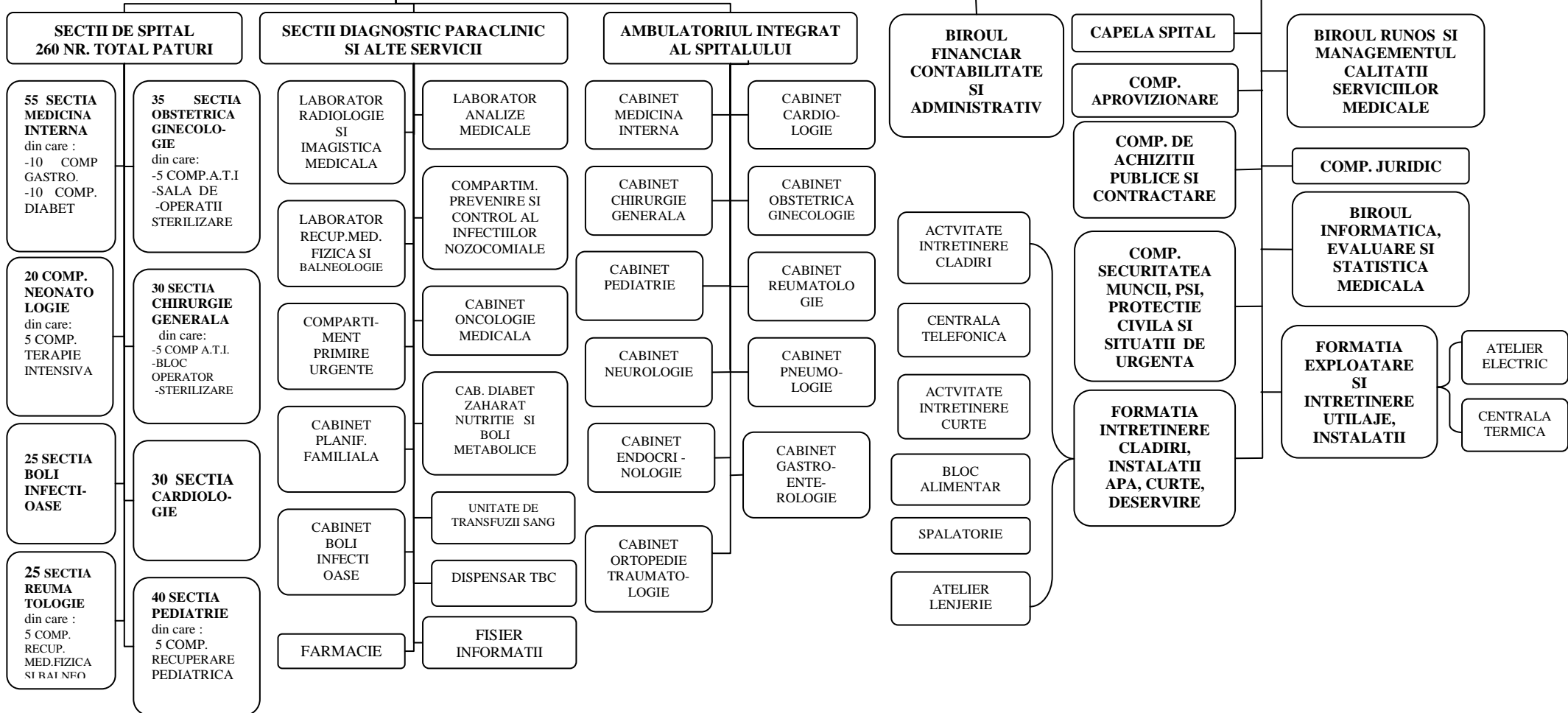
Total posturi din care	422
Medici	66
Personal mediu sanitar	183
Pers auxiliar si alt pers.	109
TESA, conducere si alt pers	30
Muncitori	34

COMITETUL DIRECTOR

MANAGER

DIRECTOR MEDICAL

DIRECTOR FINANCIAR CONTABIL



ROMANIA
JUDETUL NEAMT
CONSILIUL LOCAL AL ORASULUI TIRGU NEAMT

PROIECT

H O T A R A R E
privind aprobarea organigramei si a statului de functii al
Spitalului Orasenesc „Sfântul Dimitrie” Targu Neamt pentru anul 2015

Consiliul Local al orasului Targu Neamt,

Avand in vedere faptul ca incepand cu data de 1 iulie 2010 au fost implementate prevederile HG nr. 529/02.06.2010 realizandu-se transferul managementului activitatii Spitalului Orasenesc „Sfântul Dimitrie” Targu Neamt de catre autoritatea administratiei publice locale ; in baza prevederilor Ordinului M.S. nr. 1224/2010 privind aprobarea normativului de personal pentru asistenta medicala spitaliceasca ; art. 15 din H.G. nr. 56/2009 pentru aprobarea Normelor metodologice de aplicare a O.U.G. nr. 162/2008;

In baza competentelor stabilite in Anexa 1 Capitolul III din HG nr. 562/2009 pentru aprobarea strategiei de descentralizare in sistemul de sanatate;

Analizând expunerea de motive nr. 10700/18.05.2015 inaintata de Primarul orasului Targu Neamt si de raportul de specialitate al Biroului Resurse Umane, prin care se propune aprobarea organigramei si a statului de functii al Spitalului Orasenesc „Sfântul Dimitrie” Targu Neamt, pentru anul 2015;

In temeiul prevederilor art. 36 alin. 2 lit. „a” , alin. 3 lit. „b” si ale art. 45 alin. 1 din Legea nr. 215/2001 a administratiei publice locale , republicata, cu modificarile si completarile ulterioare ;

H O T A R A S T E

Art. 1 Se aproba organigrama si statul de functii al Spitalului Orasenesc „Sfântul Dimitrie” Targu Neamt pentru anul 2015, conform anexelor 1-5, care fac parte integranta din prezenta hotarare.

Art. 2 La data intrarii in vigoare a prezentei hotarari, se abroga orice hotarare contrara.

Art. 3 Spitalul Orasenesc „Sfântul Dimitrie” Targu Neamt prin serviciile sale de specialitate va lua masurile necesare pentru aducerea la indeplinire a prevederilor prezentei hotarari

Art.4 Secretarul orasului Targu Neamt va asigura publicitatea si comunicarea prezentei hotarari institutiilor si persoanelor interesate, prin Compartimentul Administratie locala, autoritate Tutelara.

INITIATOR,
Primarul orasului Targu Neamt
Harpa Vasilica

Avizat legalitate,
SECRETAR ORAS
Jr. LAURA ELENA MAFTEI

Primaria orasului Tirgu Neamt
Nr. 10700/18.05.2015

Avizat,
Primar,
Harpa Vasilica

RAPORT DE SPECIALITATE
privind aprobarea organigramei si statului de functii
pentru Spitalul orasenesc „**Sfântul Dimitrie**” Targu Neamt

In temeiul atributiilor stabilite de art. 182 alin (1) litera a) din Legea nr. 95/2006 prin care managerul „*stabileste si aproba numarul de personal, pe categorii si locuri de munca, in functie de normativul de personal in vigoare*” si in baza prevederilor Ordinului M.S. nr. 1224/2010 privind aprobarea normativului de personal pentru asistenta medicala spitaliceasca, s-a procedat la modificarea numarului de posturi normat pe activitati si locuri de munca.

In conformitate cu prevederile art. 15 din HG nr. 56/2009 pentru aprobarea Normelor metodologice de aplicare a OUG nr. 162/2008 privind transferul ansablului de atributii si competente exercitate de Ministerul Sanatatii catre autotitatile publice locale, totalizăm un numar de **422 de posturi**, din care :

- 66 posturi – medici si personal sanitar superior
- 183 posturi – personal mediu sanitar
- 109 posturi - personal auxiliar sanitar
- 30 posturi – personal de conducere , Tesa si alte categorii
- 34 posturi – muncitori si personal deservire

Intocmit,
ec. Ionita Elena

Primaria orasului Tirgu Neamt
Nr. 10700/18.05.2015

Expunere de motive
la proiectul de hotarare privind aprobarea organigramei si a statului de
functii pentru Spitalul Orasenesc „Sfântul Dimitrie” Targu Neamt

In baza prevederilor art. 15 din Hotararea Guvernului nr. 56/2009 pentru aprobarea Normelor metodologice de aplicare a Ordonanței de urgență a Guvernului nr. 162/2008 privind transferul ansamblului de atribuții și competențe exercitate de Ministerul Sănătății către autoritățile administrației publice locale, supun spre aprobare Consiliului Local al orasului Tirgu Neamt :

- anexa nr. 1 – structura organizatorica a **Spitalul Orasenesc „Sfântul Dimitrie” Targu Neamt**
- anexa nr. 2 – organigrama **Spitalului Orasenesc „Sfântul Dimitrie” Targu Neamt**
- anexa nr. 3 – statul de functii al **Spitalului Orasenesc „Sfântul Dimitrie” Targu Neamt**
- anexa nr. 4 – centralizatorul posturilor propuse pentru statul de functii
- anexa nr. 5 – situatia centralizatoare a numarului de posturi normate

Primar,
Harpa Vasilica

SPITALUL ORASENESC SF. DIMITRIE TG. NEAMT

ANEXA 3 LA H.C.L. Nr.

STATUL DE FUNCTII VALABIL CU 01.05.2015

NR. CRT.	LOCUL DE MUNCA GRADUL	FUNCTIA,	TREAPTA PROFESIONALA	SPECIALITATE	STUDII	QUANTUM POST	NUMELE SI PRENUMELE	MARCA
COMITET DIRECTOR- FUNCTII DE CONDUCERE								
1	MANAGER		MEDIC PRIMAR	MEDICINA INTERNA; DIABETOLOGIE	S	1,00	ANTOHI MIHAELA	1822
2	MEDIC		MEDIC SPECIALIST	MEDICINA DE URGENTA	S	1,00	BERCEA GABRIELA	2638
3	DIRECTOR FINANCIAR-CONTABIL	grad II	ECONOMIST IA		S	1,00	HUMULESCU DOINA IONICA	2070
TOTAL POSTURI						3,00		
CAPELA SPITAL								
1	PREOT		PREOT GRAD I		S	1,00	CRETU EMILIAN	2293
TOTAL POSTURI						1,00		
BIROU R.U.N.O.S. SI MANAGEMENTUL CALITATII SERV. MEDICALE								
1	SEF BIROU	grad II	ECONOMIST IA		S	1,00	OLTEANU MAGDALENA	2314
2	ECONOMIST		ECONOMIST I		S	1,00	PASALAU MIHAELA	2337
3	REFERENT		REFERENT IA		M	1,00	ACSINTE VARVARA	1479
4	REFERENT DE SPECIALITATE		REFERENT DE SPECIALIT. II		S	1,00	DUNCA GEORGIANA IONELA	2642
5	ECONOMIST		ECONOMIST I		S	1,00	BARSAN ELENA LOREDANA	2724
6	MEDIC		MEDIC		S	1,00	POST VACANT	
7	SECRETAR-DACTILOGRAF		SECRETAR DACTILOGRAF		M	1,00	SCHIOPU GEORGETA	1307
TOTAL POSTURI						7,00		
BIROU FINANCIAR-CONTABILITATE SI ADMINISTRATIV								
1	SEF BIROU	grad II	ECONOMIST IA		S	1,00	CRISTESCU IOAN	1656
2	ECONOMIST		ECONOMIST IA		S	1,00	DOMNICA ADINA IULIA	2197
3	ECONOMIST		ECONOMIST IA		S	1,00	IONITA MIHAELA DELIA	2574
4	ECONOMIST		ECONOMIST IA		S	1,00	POST VACANT -rezervat Dir. Fin. Contab.	
5	ECONOMIST		ECONOMIST I		S	1,00	BRASOVEANU MIRELA POMPILIA	2074
6	CASIER		CASIER		M	1,00	DOMINTE ELENA	2202
7	MAGAZINER		MAGAZINER		M	1,00	GAVRILOAE CONSTANTIN	2256
8	MAGAZINER		MAGAZINER		M	1,00	ALBU CONSTANTIN	2312
TOTAL POSTURI						8,00		
COMPARTIMENT APROVIZIONARE								
1	ECONOMIST		ECONOMIST		M	1,00	POST VACANT	
2	MERCEOLOG		MERCEOLOG I		M	1,00	RUSU PAUL	2281
TOTAL POSTURI						2,00		
COMPARTIMENT ACHIZITII PUBLICE SI CONTRACTARE								
1	ECONOMIST		ECONOMIST I		S	1,00	TITEI GEORGETA	2288
TOTAL POSTURI						1,00		
COMPARTIMENTUL JURIDIC								
1	CONSILIER JURIDIC		CONSILIER JURIDIC IA		S	1,00	GAVRIL MIA	2541
TOTAL POSTURI						1,00		
COMPARTIMENTUL SECURITATEA MUNCII, PSI,PROTECTIE CIVILA SI SITUATII DE URGENTA								
1	INGINER		INGINER IA		S	1,00	GEORGESCU LUCIAN-NICUSOR	2536
TOTAL POSTURI						1,00		

SECTIA MEDICINA INTERNA

1	MEDIC SEF SECTIE grad II	MED.PRIMAR- DOCTOR IN STIINTE	MEDICINA INTERNA; GASTROENTEROS		1,00	AXINIA TUDOREL	1363
2	MEDIC	MEDIC PRIMAR	MEDICINA INTERNA; DIABETOLOGIE	S	1,00	POST VACANT rezervat Manager	1822
3	MEDIC	MEDIC PRIMAR	MEDICINA INTERNA	S	1,00	SILION CAMELIA	2093
4	MEDIC	MEDIC SPECIALIST	MEDICINA INTERNA	S	1,00	HANGANU ELENA-GABRIELA	2628
5	ASISTENT MEDICAL SEF	ASISTENT MEDICAL PRINCIPAL	MEDICINA GENERALA	PL	1,00	PINTRIJEL GEORGETA	1893
6	ASISTENT MEDICAL	ASISTENT MEDICAL PRINCIPAL	MEDICINA GENERALA	PL	1,00	MACSIM MARIA	1331
7	ASISTENT MEDICAL	ASISTENT MEDICAL PRINCIPAL	MEDICINA GENERALA	PL	1,00	APOSTOL ECATERINA	2339
8	ASISTENT MEDICAL	ASISTENT MEDICAL PRINCIPAL	MEDICINA GENERALA	PL	1,00	DIACONU MIHAIELA	1766
9	ASISTENT MEDICAL	ASISTENT MEDICAL	MEDICINA GENERALA	PL	1,00	MELINTE MIHAELA	2561
10	ASISTENT MEDICAL	ASISTENT MEDICAL	MEDICINA GENERALA	PL	1,00	VITELARU LIDIA	2670
11	ASISTENT MEDICAL	ASISTENT MEDICAL	MEDICINA GENERALA	PL	1,00	HANTAR ELENA SIMONA	2697
12	ASISTENT MEDICAL	ASISTENT MEDICAL	MEDICINA GENERALA	PL	1,00	MAFTEI ELENA	2663
13	ASISTENT MEDICAL	ASISTENT MEDICAL	MEDICINA GENERALA	PL	1,00	BEJAN MARIANA	2691
14	ASISTENT MEDICAL	ASISTENT MEDICAL	MEDICINA GENERALA	PL	1,00	POST VACANT	
15	REGISTRATOR MEDICAL	REGISTRATOR MEDICAL PRINCIPAL		M	1,00	SAVA LILIANA	2569
16	INFIRMIERA	INFIRMIERA		M	1,00	COJOCARU CLAUDIA	2116
17	INFIRMIERA	INFIRMIERA		M	1,00	NITA MIHAELA ADRIANA	1875
18	INFIRMIERA	INFIRMIERA DEBUTANTA		M	1,00	TEODORESCU KATI RAMONA	2759
19	INFIRMIERA	INFIRMIERA		M	1,00	CUCOS GHEORGHITA	2596
20	INFIRMIERA	INFIRMIERA		M	1,00	MOISII MARIA	2607
21	INFIRMIERA	INFIRMIERA		M	1,00	PASCARIU MARIANA	2633
22	INFIRMIERA	INFIRMIERA DEBUTANTA		M	1,00	HUMA LILIANA	2736
23	INGRIJITOARE	INGRIJITOARE		M	1,00	CONSTANTIN AURICA	2287
24	INGRIJITOARE	INGRIJITOARE		M	1,00	SCHIOPU MARIA	1749
25	INGRIJITOARE	INGRIJITOARE		M	1,00	MASLINCA DANIELA LILIANA	2608
26	INGRIJITOARE	INGRIJITOARE		M	1,00	MANOLE VALENTINA	2705
27	INGRIJITOARE	INGRIJITOARE		M	1,00	POST VACANT	

COMPARTIMENT GASTROENTEROLOGIE

28	MEDIC	MEDIC SPECIALIST	GASTROENTEROLOGIE	S	1,00	POST VACANT	
29	ASISTENT MEDICAL	ASISTENT MEDICAL PRINCIPAL	MEDICINA GENERALA	PL	1,00	AZOITEI MARIA	1721
30	ASISTENT MEDICAL	ASISTENT MEDICAL PRINCIPAL	MEDICINA GENERALA	PL	1,00	BALTATESCU VIOLETA	2414
31	ASISTENT MEDICAL	ASISTENT MEDICAL	MEDICINA GENERALA	PL	1,00	ILIES LIDIA	2627
32	ASISTENT MEDICAL	ASISTENT MEDICAL	MEDICINA GENERALA	PL	1,00	STATE LOREDANA	2676

COMP.DIABET ZAHARAT,NUTRITIE,

33	ASISTENT MEDICAL	ASISTENT MEDICAL	MEDICINA GENERALA	PL	1,00	STAN IONELA	2755
34	ASISTENT MEDICAL	ASISTENT MEDICAL PRINCIPAL	MEDICINA GENERALA	PL	1,00	POST VACANT	
35	ASISTENT MEDICAL	ASISTENT MEDICAL	MEDICINA GENERALA	PL	1,00	POST VACANT	
36	ASISTENT MEDICAL	ASISTENT MEDICAL	MEDICINA GENERALA	PL	1,00	POST VACANT	

TOTAL POSTURI**36,00****SECTIA OBSTETRICA GINECOLOGIE**

1	MEDIC SEF SECTIE grad I	MEDIC PRIMAR	O.G.	S	1,00	DUMITRESCU DAN NICOLAE	1918
2	MEDIC	MEDIC PRIMAR	O.G.	S	1,00	IOVOAIA MADALINA	2208
3	MEDIC	MEDIC	O.G.	S	1,00	POST VACANT	
4	MEDIC	MEDIC REZIDENT AN I	OG	S	1,00	BUCURESTEANU IULIA-MIHAELA	2720
5	MEDIC	MEDIC REZIDENT AN I	O.G.	S	1,00	BOCANET CRISTINA ECATERINA	2744
6	ASISTENT MEDICAL SEF	ASISTENT MEDICAL PRINCIPAL	O.G.	PL	1,00	MUNTEANU LAURA GENOVEVA	1778
7	ASISTENT MEDICAL	ASISTENT MEDICAL PRINCIPAL	O.G.	PL	1,00	TROFIN MARIA	1107
8	ASISTENT MEDICAL	ASISTENT MEDICAL PRINCIPAL	O.G.	PL	1,00	ANUSCA CRISTINA	2341
9	ASISTENT MEDICAL	ASISTENT MEDICAL PRINCIPAL	MEDICINA GENERALA	PL	1,00	ASAVINEI TEODORINA	2497
10	ASISTENT MEDICAL	ASISTENT MEDICAL PRINCIPAL	O.G.	PL	1,00	DABIJA ANA MARIA	2498

11	ASISTENT MEDICAL	ASISTENT MEDICAL PRINCIPAL	MEDICINA GENERALA	PL	1,00	HARJA FLORINA-GABRIELA	2555
12	ASISTENT MEDICAL	ASISTENT MEDICAL PRINCIPAL	O.G.	PL	1,00	SOLOMON MARIANA	2619
13	ASISTENT MEDICAL	ASISTENT MEDICAL PRINCIPAL	MEDICINA GENERALA	PL	1,00	MENEGON BOTESCU MARIA	2620
14	ASISTENT MEDICAL	ASISTENT MEDICAL PRINCIPAL	O.G. / MEDICINA GENERALA	PL	1,00	POST VACANT	
15	ASISTENT MEDICAL	ASISTENT MEDICAL PRINCIPAL	O.G. / MEDICINA GENERALA	PL	1,00	POST VACANT	
16	ASISTENT MEDICAL	ASISTENT MEDICAL	MEDICINA GENERALA	PL	1,00	RUSU GEANINA	2530
17	REGISTRATOR MEDICAL	REGISTRATOR MEDICAL		M	1,00	SAVA LACRAMIOARA	2727
18	INFIRMIERA	INFIRMIERA		M	1,00	HERTA MARIA	2062
19	INFIRMIERA	INFIRMIERA		M	1,00	MANOLE GETA	2016
20	INFIRMIERA	INFIRMIERA		M	1,00	BORS ADINA	2422
21	INFIRMIERA	INFIRMIERA		M	1,00	POST VACANT	
22	INFIRMIERA	INFIRMIERA		M	1,00	POST VACANT	
23	INFIRMIERA	INFIRMIERA DEBUTANTA		M	1,00	URZICA VERONICA	2734
24	INFIRMIERA	INFIRMIERA DEBUTANTA		M	1,00	OBREJA GHEORGHITA	2735
25	INGRIJITOARE	INGRIJITOARE		M	1,00	TROFIN GABRIELA	2488
26	INGRIJITOARE	INGRIJITOARE		M	1,00	OLARIU MARIA	2489
27	INGRIJITOARE	INGRIJITOARE		M	1,00	MIHALCEA IULIANA	2500
28	INGRIJITOARE	INGRIJITOARE		M	1,00	PAVEL TEODORA	2552
29	INGRIJITOARE	INGRIJITOARE		M	1,00	VASILIU MIHAELA	2704

SALA DE OPERATII SI STERILIZARE

30	ASISTENT MEDICAL	ASISTENT MEDICAL PRINCIPAL	O.G.	PL	1,00	MURARIU CRISTINA	2336
31	ASISTENT MEDICAL	ASISTENT MEDICAL PRINCIPAL	O.G.	PL	1,00	MAXIM EMILIA	2509
32	ASISTENT MEDICAL	ASISTENT MEDICAL	MEDICINA GENERALA	PL	1,00	ANDREI CLAUDIA IULIANA	2737
33	ASISTENT MEDICAL	ASISTENT MEDICAL	O.G. / MEDICINA GENERALA	PL	1,00	POST VACANT	

COMPARTIMENT A.T.I.-O.G.

34	MEDIC	MEDIC	A.T.I.	S	1,00	POST VACANT	
35	ASISTENT MEDICAL	ASISTENT MEDICAL PRINCIPAL	O.G.	PL	1,00	OPRISAN LUMINITA NATALIA	1899
36	ASISTENT MEDICAL	ASISTENT MEDICAL PRINCIPAL	O.G.	PL	1,00	CIOATA MARIA	2268
37	ASISTENT MEDICAL	ASISTENT MEDICAL PRINCIPAL	O.G.	PL	1,00	PINDIC CARMEN -GABRIELA	2218
38	ASISTENT MEDICAL	ASISTENT MEDICAL PRINCIPAL	O.G.	PL	1,00	DEDIU GEORGETA	2182

TOTAL POSTURI

38,00

COMPARTIMENT NEONATOLOGIE

1	MEDIC	MEDIC PRIMAR	PEDIATRIE	S	1,00	IMIREANU SIMONA CRISTINA	2048
2	MEDIC	MEDIC	NEONATOLOGIE / PEDIATRIE	S	1,00	POST VACANT	
3	ASISTENT MEDICAL	ASISTENT MEDICAL PRINCIPAL	PEDIATRIE	PL	1,00	IONESCU RAMONA	2262
4	ASISTENT MEDICAL	ASISTENT MEDICAL PRINCIPAL	PEDIATRIE	PL	1,00	BUZDEA IULIANA	2490
5	ASISTENT MEDICAL	ASISTENT MEDICAL PRINCIPAL	PEDIATRIE	PL	1,00	IOVOAIA DANA	2492
6	ASISTENT MEDICAL	ASISTENT MEDICAL PRINCIPAL	O.G.	PL	1,00	ZAHALEANU ANA VALERICA	2494
7	ASISTENT MEDICAL	ASISTENT MEDICAL PRINCIPAL	MEDICINA GENERALA	PL	1,00	CARLAN ANA-MARIA	2543
8	ASISTENT MEDICAL	ASISTENT MEDICAL PRINCIPAL	MEDICINA GENERALA	PL	1,00	AMIHAILESEI MARIA	2570
9	ASISTENT MEDICAL	ASISTENT MEDICAL PRINCIPAL	MEDICINA GENERALA	PL	1,00	CUCOS IRINA	2609
10	INFIRMIERA	INFIRMIERA		M	1,00	GIANGU LILIANA	2294
11	INFIRMIERA	INFIRMIERA		M	1,00	SORIC LUCICA	2239
12	INFIRMIERA	INFIRMIERA		M	1,00	DOLHASCU MARIA	1944
13	INFIRMIERA	INFIRMIERA		M	1,00	MANOLACHE TATIANA	2564
14	INFIRMIERA	INFIRMIERA		M	1,00	ROSU ANA-CARMINA	2565
15	INFIRMIERA	INGRIJITOARE		M	1,00	APETREI ELENA	1876
16	INFIRMIERA	INGRIJITOARE		M	1,00	POST VACANT	

TERAPIE INTENSIVA-NEONATOLOGIE

17	ASISTENT MEDICAL	ASISTENT MEDICAL PRINCIPAL	PEDIATRIE	PL	1,00	ALEXANDRU CLAUDIA	2271
18	ASISTENT MEDICAL	ASISTENT MEDICAL PRINCIPAL	PEDIATRIE	PL	1,00	BARBU STEFANIA LAURA	2320
19	ASISTENT MEDICAL	ASISTENT MEDICAL PRINCIPAL	PEDIATRIE	PL	1,00	BORCILA ELENA	2338

TOTAL POSTURI**19,00****SECTIA CHIRURGIE GENERALA**

1	MEDIC SEF SECTIE grad I	MEDIC PRIMAR	CHIRURGIE GENERALA	S	1,00	CIOBANU RADU-SERGIU	1468
2	MEDIC	MEDIC PRIMAR	CHIRURGIE GENERALA	S	1,00	AVADANEI NECULAI	1459
3	MEDIC	MED.PRIMAR- DOCTOR IN STIINTE	CHIRURGIE GENERALA	S	1,00	TANASE MIHAI AURELIAN	2673
4	MEDIC	MEDIC SPECIALIST	CHIRURGIE GENERALA	S	1,00	LUCACHI CAESAR	2726
5	MEDIC	MEDIC REZIDENT AN II	CHIRURGIE GENERALA	S	1,00	DAVID TATIANA	2715
6	ASISTENT MEDICAL SEF	ASISTENT MEDICAL PRINCIPAL	MEDICINA GENERALA	PL	1,00	UNGUREANU EVA	1338
7	ASISTENT MEDICAL	ASISTENT MEDICAL PRINCIPAL	MEDICINA GENERALA	PL	1,00	PURCEL AMALIA	1786
8	ASISTENT MEDICAL	ASISTENT MEDICAL PRINCIPAL	MEDICINA GENERALA	PL	1,00	COSOFRET IRINA	2154
9	ASISTENT MEDICAL	ASISTENT MEDICAL PRINCIPAL	MEDICINA GENERALA	PL	1,00	VASILIU LACRAMIOARA MARIA	2323
10	ASISTENT MEDICAL	ASISTENT MEDICAL PRINCIPAL	MEDICINA GENERALA	PL	1,00	SORIC GEORGETA	2504
11	ASISTENT MEDICAL	ASISTENT MEDICAL PRINCIPAL	MEDICINA GENERALA	PL	1,00	POST VACANT	
12	ASISTENT MEDICAL	ASISTENT MEDICAL	MEDICINA GENERALA	PL	1,00	POST VACANT	
13	ASISTENT MEDICAL	ASISTENT MEDICAL	MEDICINA GENERALA	PL	1,00	POST VACANT	
14	ASISTENT MEDICAL	ASISTENT MEDICAL PRINCIPAL	MEDICINA GENERALA	PL	1,00	POST VACANT	
15	REGISTRATOR MEDICAL	REGISTRATOR MEDICAL		M	1,00	POST VACANT	
16	INFIRMIERA	INFIRMIERA		M	1,00	BALTATESCU MARIA	2063
17	INFIRMIERA	INFIRMIERA		M	1,00	UNGUREANU MIHAELA	2196
18	INFIRMIERA	INFIRMIERA		M	1,00	TARDEA MARIA	2515
19	INFIRMIERA	INFIRMIERA		M	1,00	POST VACANT	
20	INGRIJITOARE	INGRIJITOARE		M	1,00	LAZAR MARIA	2424
21	INGRIJITOARE	INGRIJITOARE		M	1,00	MANOLE DOINA	2477
22	INGRIJITOARE	INGRIJITOARE		M	1,00	PETRARIU MARIA DOINA	2514
23	INGRIJITOARE	INGRIJITOARE		M	1,00	ZAMFIR NICOLETA	2563
24	INGRIJITOARE	INGRIJITOARE		M	1,00	ADUMITROAIEI VALENTINA ELEN/	2632

BLOC OPERATOR + STERILIZARE CHIRURGIE

25	ASISTENT MEDICAL	ASISTENT MEDICAL PRINCIPAL	MEDICINA GENERALA	PL	1,00	GAMAN SILVIA	1452
26	ASISTENT MEDICAL	ASISTENT MEDICAL PRINCIPAL	MEDICINA GENERALA	PL	1,00	ANDRUSCA ECATERINA	1154
27	ASISTENT MEDICAL	ASISTENT MEDICAL PRINCIPAL	MEDICINA GENERALA	PL	1,00	CUCU IULIANA	2523
36	ASISTENT MEDICAL	ASISTENT MEDICAL PRINCIPAL	MEDICINA GENERALA	PL	1,00	BORDIANU CLAUDIA	2223
29	INFIRMIERA	INFIRMIERA		M	1,00	BOTEZ ANA	2055

COMPARTIMENT A.T.I.-CHIRURGIE

31	MEDIC	MEDIC PRIMAR	A.T.I.	S	0,50	UNGUREANU VLADIMIR	2645
32	MEDIC	MEDIC	A.T.I.	S	1,00	POST VACANT	
33	MEDIC	MEDIC	A.T.I.	S	0,50	POST VACANT	
34	MEDIC	MEDIC REZIDENT	A.T.I.	S	1,00	POST VACANT	
35	ASISTENT MEDICAL	ASISTENT MEDICAL PRINCIPAL	MEDICINA GENERALA	PL	1,00	VARTIC ANA MARIA	2272
37	ASISTENT MEDICAL	ASISTENT MEDICAL PRINCIPAL	MEDICINA GENERALA	PL	1,00	MARIAN RODICA	2216
38	ASISTENT MEDICAL	ASISTENT MEDICAL PRINCIPAL	MEDICINA GENERALA	PL	1,00	BARBU OANA ELENA	2526
39	ASISTENT MEDICAL	ASISTENT MEDICAL PRINCIPAL	MEDICINA GENERALA	PL	1,00	NECHITA GEORGETA GIANINA	2525

TOTAL POSTURI**36,00****SECTIA BOLI INFECTIOASE**

1	MEDIC SEF SECTIE grad I	MEDIC PRIMAR	BOLI INFECTIOASE	S	1,00	FILIP IOANA ECATERINA	2606
2	MEDIC	MEDIC	BOLI INFECTIOASE	S	1,00	POST VACANT	
3	ASISTENT MEDICAL SEF	ASISTENT MEDICAL PRINCIPAL	MEDICINA GENERALA	PL	1,00	SARGU DOINA	1652
4	ASISTENT MEDICAL	ASISTENT MEDICAL	MEDICINA GENERALA	PL	1,00	ASANDEI ANA MARIA	2586
5	ASISTENT MEDICAL	ASISTENT MEDICAL PRINCIPAL	MEDICINA GENERALA	PL	1,00	ROMAN ELENA	1762
6	ASISTENT MEDICAL	ASISTENT MEDICAL PRINCIPAL	MEDICINA GENERALA	PL	1,00	COJOCARU MARIA	1491

7	ASISTENT MEDICAL	ASISTENT MEDICAL PRINCIPAL	MEDICINA GENERALA	PL	1,00	OBREJA NICULINA	1414
8	ASISTENT MEDICAL	ASISTENT MEDICAL PRINCIPAL	MEDICINA GENERALA	PL	1,00	ANDREI LILIANA	2568
9	ASISTENT MEDICAL	ASISTENT MEDICAL	MEDICINA GENERALA	PL	1,00	LACATUSU ELENA	2683
10	ASISTENT MEDICAL	ASISTENT MEDICAL PRINCIPAL	MEDICINA GENERALA	PL	1,00	CREANGA CRISTINA	2708
11	ASISTENT MEDICAL	ASISTENT MEDICAL DEBUTANT	MEDICINA GENERALA	PL	1,00	APETREI ANGELICA NICULINA	2721
12	REGISTRATOR MEDICAL	REGISTRATOR MEDICAL PRINCIPAL		M	1,00	COJOCARU ANGELICA	905
13	INFIRMIERA	INFIRMIERA		M	1,00	AMARIEI TEODORA	2061
14	INFIRMIERA	INFIRMIERA		M	1,00	URSU MARIA	2039
15	INFIRMIERA	INFIRMIERA		M	1,00	IOSUB ANA	1662
16	INFIRMIERA	INFIRMIERA DEBUTANTA		M	1,00	SIVU ANA - ALINA	2711
17	INFIRMIERA	INFIRMIERA		M	1,00	POST VACANT	
18	SPALATOREASA	SPALATOREASA		M	1,00	DEDIU GEANINA	2739
19	INGRIJITOARE	INGRIJITOARE		M	1,00	BUTNARIU NICOLETA	1701
20	INGRIJITOARE	INGRIJITOARE		M	1,00	APETREI DANIELA	1952
21	INGRIJITOARE	INGRIJITOARE		M	1,00	NASTASE VERONICA	1946
22	INGRIJITOARE	INGRIJITOARE		M	1,00	NECHITA CARMINA	2516
23	INGRIJITOARE	INGRIJITOARE		M	1,00	POST VACANT	
TOTAL POSTURI					23,00		

SECTIA CARDIOLOGIE

1	MEDIC SEF SECTIE grad I	MEDIC PRIMAR	CARDIOLOGIE	S	1,00	GIRBEA SMARANDA ELENA	1253
2	MEDIC	MEDIC PRIMAR	CARDIOLOGIE	S	1,00	SAVA ALEXANDRU	2071
3	MEDIC	MEDIC	CARDIOLOGIE	S	1,00	POST VACANT	
4	MEDIC	MEDIC REZIDENT AN II	CARDIOLOGIE	S	1,00	TIGANASU OLIVIA	2716
5	ASISTENT MEDICAL SEF	ASISTENT MEDICAL PRINCIPAL	MEDICINA GENERALA	PL	1,00	ILIOI ELENA	1906
6	ASISTENT	ASISTENT MEDICAL PRINCIPAL	MEDICINA GENERALA	PL	1,00	ROSU VALERICA DOINITA	1848
7	ASISTENT	ASISTENT MEDICAL PRINCIPAL	MEDICINA GENERALA	PL	1,00	GAVRILOAIA NARCISA IONELA	2180
8	ASISTENT	ASISTENT MEDICAL PRINCIPAL	MEDICINA GENERALA	PL	1,00	BACIU GABRIELA	2109
9	ASISTENT	ASISTENT MEDICAL PRINCIPAL	MEDICINA GENERALA	PL	1,00	TINCA CARMINA	2507
10	ASISTENT	ASISTENT MEDICAL PRINCIPAL	MEDICINA GENERALA	PL	1,00	VARTIC MIHAELA	2521
11	ASISTENT	ASISTENT MEDICAL PRINCIPAL	MEDICINA GENERALA	PL	1,00	RACHERIU TATIANA	2558
12	ASISTENT	ASISTENT MEDICAL	MEDICINA GENERALA	PL	1,00	ISTRATE CRISTINA	1966
13	ASISTENT	ASISTENT MEDICAL	MEDICINA GENERALA	PL	1,00	MOSOR CLARA	2756
14	INFIRMIERA	INFIRMIERA		M	1,00	DUMITRIU MARIA	2040
15	INFIRMIERA	INFIRMIERA		M	1,00	SUFRAGIU MARIA	2041
16	INFIRMIERA	INFIRMIERA		M	1,00	SOLDAN ELENA	2612
17	INFIRMIERA	INFIRMIERA		M	1,00	SALARU ANISOARA	2646
18	INGRIJITOARE	INGRIJITOARE		M	1,00	ANDRIOAIA ELENA VIRGINIA	2043
19	INGRIJITOARE	INGRIJITOARE		M	1,00	OLTEANU AURICA	2468
20	INGRIJITOARE	INGRIJITOARE		M	1,00	PINTEA GEORGETA	2740
21	INGRIJITOARE	INGRIJITOARE		M	1,00	ZAMFIR GABRIELA	2758
22	INGRIJITOARE	INGRIJITOARE		M	1,00	SINTEANU ELENA	2750
23	INGRIJITOARE	INGRIJITOARE		M	1,00	POST VACANT	
TOTAL POSTURI					23,00		

SECTIA REUMATOLOGIE

1	MEDIC SEF SECTIE grad I	MEDIC PRIMAR	REUMATOLOGIE	S	1,00	RICHTER IOLANDA GEORGETA	2240
2	MEDIC	MEDIC	REUMATOLOGIE / REABILITARE MECS		1,00	POST VACANT	
3	ASISTENT MEDICAL SEF	ASISTENT MEDICAL PRINCIPAL	MEDICINA GENERALA	PL	1,00	RAUCESCU NICOLETA	2283
4	ASISTENT MEDICAL	ASISTENT MEDICAL PRINCIPAL	MEDICINA GENERALA	PL	1,00	RACHERIU ELENA	2069
5	ASISTENT MEDICAL	ASISTENT MEDICAL PRINCIPAL	MEDICINA GENERALA	PL	1,00	STATE DANIELA	2463
6	ASISTENT MEDICAL	ASISTENT MEDICAL PRINCIPAL	MEDICINA GENERALA	PL	1,00	GAVRILOAIA ELENA	2464
7	ASISTENT MEDICAL	ASISTENT MEDICAL PRINCIPAL	MEDICINA GENERALA	PL	1,00	MURARIU MARIA-VIORELA	2501
8	ASISTENT MEDICAL	ASISTENT MEDICAL	MEDICINA GENERALA	PL	1,00	NICOARA IRINA	2546

9	ASISTENT MEDICAL	ASISTENT MEDICAL	MEDICINA GENERALA	PL	1,00	COZMA ELENA	2622
10	ASISTENT MEDICAL	ASISTENT MEDICAL	MEDICINA GENERALA	PL	1,00	POST VACANT	
11	REGISTRATOR MEDICAL	REGISTRATOR MEDICAL		M	1,00	POST VACANT	
12	INFIRMIERA	INFIRMIERA		M	1,00	UNGUREANU MARIANA	1961
13	INFIRMIERA	INFIRMIERA		M	1,00	ANCUTA ANGELICA	2291
14	INFIRMIERA	INFIRMIERA		M	1,00	GRIGORAS ANA	2430
15	INFIRMIERA	INFIRMIERA		M	1,00	SORLESCU MARIA	2520
16	INGRIJITOARE	INGRIJITOARE		M	1,00	MARIUTA ELENA	2671
17	INGRIJITOARE	INGRIJITOARE		M	1,00	POST VACANT	0
TOTAL POSTURI					17,00		

SECTIA PEDIATRIE

1	MEDIC SEF SECTIE grad I	MEDIC PRIMAR	PEDIATRIE	S	1,00	SURPATANU GABRIELA	1247
2	MEDIC	MEDIC PRIMAR	PEDIATRIE	S	1,00	MELINTE MARIA	1346
3	MEDIC	MEDIC PRIMAR	PEDIATRIE	S	1,00	IRIMESCU GABRIELA	2054
4	MEDIC	MEDIC PRIMAR	PEDIATRIE	S	1,00	MURARIU IONELA-GHEORGHITA	2352
5	MEDIC	MEDIC REZIDENT AN III	PEDIATRIE	S	1,00	CIUBOTARU GABRIELA	2714
6	ASISTENT MEDICAL SEF	ASISTENT MEDICAL PRINCIPAL	PEDIATRIE	S	1,00	OBOROCEANU AURA ANA	2175
7	ASISTENT MEDICAL	ASISTENT MEDICAL PRINCIPAL	PEDIATRIE	PL	1,00	ONISORU ELENA	1649
8	ASISTENT MEDICAL	ASISTENT MEDICAL PRINCIPAL	PEDIATRIE	PL	1,00	CRETU ANGELIA	1443
9	ASISTENT MEDICAL	ASISTENT MEDICAL PRINCIPAL	PEDIATRIE	PL	1,00	ISACHE I.FLORICA	2149
10	ASISTENT MEDICAL	ASISTENT MEDICAL PRINCIPAL	MEDICINA GENERALA	PL	1,00	HUMA ANA GIANINA	2303
11	ASISTENT MEDICAL	ASISTENT MEDICAL PRINCIPAL	PEDIATRIE	PL	1,00	IRIMIA RODICA	2527
12	ASISTENT MEDICAL	ASISTENT MEDICAL PRINCIPAL	MEDICINA GENERALA	PL	1,00	ANDREI SIMONA MARIA	2695
13	ASISTENT MEDICAL	ASISTENT MEDICAL	MEDICINA GENERALA	PL	1,00	URZICA MARIA	1792
14	ASISTENT MEDICAL	ASISTENT MEDICAL	MEDICINA GENERALA	PL	1,00	ATODIRESEI MARIA ALEXANDRA	2699
15	ASISTENT	ASISTENT MEDICAL	MEDICINA GENERALA	PL	1,00	STAN LUMINITA	2260
16	ASISTENT MEDICAL	ASISTENT MEDICAL	MEDICINA GENERALA	PL	1,00	RADEANU COSTEL	2757
17	ASISTENT MEDICAL	ASISTENT MEDICAL PRINCIPAL		S	1,00	POST VACANT	
18	PSIHOLOG	PSIHOLOG SPECIALIST	PSIHOLOGIE CLINICA	S	1,00	BACIU MIRELA	2725
19	REGISTRATOR MEDICAL	REGISTRATOR MEDICAL		M	1,00	POST VACANT	
20	INFIRMIERA	INFIRMIERA		M	1,00	CORFU ELENA	2582
21	INFIRMIERA	INFIRMIERA		M	1,00	STIRBU NICOLETA	2745
23	INFIRMIERA	INFIRMIERA		M	1,00	POST VACANT	
22	INFIRMIERA	INFIRMIERA DEBUTANTA		M	1,00	NASTASA MARIA MAGDALENA	2748
24	INFIRMIERA	INFIRMIERA DEBUTANTA		M	1,00	IONEL ANA	2710
25	INFIRMIERA	INFIRMIERA DEBUTANTA		M	1,00	BARBULET ELENA	2760
26	INGRIJITOARE	INGRIJITOARE		M	1,00	IRIMIA CRISTINA	2243
27	INGRIJITOARE	INGRIJITOARE		M	1,00	IRIMIA MARIA	2581
28	INGRIJITOARE	INGRIJITOARE		M	1,00	ARUXANDI ILEANA	2614
29	INGRIJITOARE	INGRIJITOARE		M	1,00	APOSTOL NICULINA	2623
TOTAL POSTURI					29,00		

COMPARTIMENT PRIMIRE URGENTE

1	MEDIC	MEDIC PRIMAR	MEDICINA GENERALA	S	1,00	IGNAT MARIAN	2630
2	MEDIC	MEDIC SPECIALIST	MEDICINA DE URGENTA	S	1,00	POST VACANT -rezervat Director	2638
3	MEDIC	MEDIC SPECIALIST	MEDICINA DE URGENTA	S	1,00	TEODORESCU ROMICA	2639
4	MEDIC	MEDIC	MED. DE URGENTA / MED.GENERALA	S	1,00	POST VACANT	
5	MEDIC	MEDIC	MED. DE URGENTA / MED.GENERALA	S	1,00	POST VACANT	
6	ASISTENT MEDICAL SEF	ASISTENT MEDICAL PRINCIPAL	MEDICINA GENERALA	PL	1,00	AXINIA MIHAELA CRISTINA	1832
7	ASISTENT MEDICAL	ASISTENT MEDICAL	PEDIATRIE	S	1,00	CRACIUN MIHAELA	2441
8	ASISTENT MEDICAL	ASISTENT MEDICAL	MEDICINA GENERALA	SS	1,00	ZLAT MARIA	2651
9	ASISTENT MEDICAL	ASISTENT MEDICAL PRINCIPAL	PEDIATRIE	PL	1,00	VLEOANGA ANGELICA	1888
10	ASISTENT MEDICAL	ASISTENT MEDICAL PRINCIPAL	MEDICINA GENERALA	PL	1,00	MUSTEATA MARIA LOREDANA	2487

11	ASISTENT MEDICAL	ASISTENT MEDICAL PRINCIPAL	MEDICINA GENERALA	PL	1,00	RADEANU MARIA	2440
12	SORA MEDICALA	SORA MEDICALA PRINCIPALA	PEDIATRIE	M	1,00	ATODIRESEI SILVIA	690
13	ASISTENT MEDICAL	ASISTENT MEDICAL PRINCIPAL	MEDICINA GENERALA	PL	1,00	ANTON AANEI N.MARIA	2152
14	ASISTENT MEDICAL	ASISTENT MEDICAL PRINCIPAL	MEDICINA GENERALA	PL	1,00	BALABAN LENUTA	1740
15	ASISTENT MEDICAL	ASISTENT MEDICAL PRINCIPAL	MEDICINA GENERALA	PL	1,00	CIOCOIU DRAGOS SIMION	2418
16	ASISTENT MEDICAL	ASISTENT MEDICAL PRINCIPAL	MEDICINA GENERALA	PL	1,00	CAMPANU ANCA	2522
17	ASISTENT MEDICAL	ASISTENT MEDICAL PRINCIPAL	MEDICINA GENERALA	PL	1,00	MOSOR MARIA	2524
18	ASISTENT MEDICAL	ASISTENT MEDICAL PRINCIPAL	MEDICINA GENERALA	S	1,00	VRANCEANU GHEORGHITA-OVIDI	2252
19	ASISTENT MEDICAL	ASISTENT MEDICAL PRINCIPAL	MEDICINA GENERALA	PL	1,00	ALMASANU DANIEL	1575
20	ASISTENT MEDICAL	ASISTENT MEDICAL PRINCIPAL	MEDICINA GENERALA	PL	1,00	ISTRATE LUCICA	1727
21	ASISTENT MEDICAL	ASISTENT MEDICAL PRINCIPAL	MEDICINA GENERALA	PL	1,00	LARIU ELENA RENATA	2652
22	ASISTENT MEDICAL	ASISTENT MEDICAL PRINCIPAL	MEDICINA GENERALA	PL	1,00	MAHU TUDORITA	1372
23	ASISTENT MEDICAL	ASISTENT MEDICAL PRINCIPAL	MEDICINA GENERALA	PL	1,00	CUCOS ELENA IONELA	2150
24	REGISTRATOR MEDICAL	REGISTRATOR MEDICAL PRINCIPAL		M	1,00	VITELARU VASIA	2331
25	REGISTRATOR MEDICAL	REGISTRATOR MEDICAL PRINCIPAL		M	1,00	DANILA-COSOFRET MARIA	1812
26	REGISTRATOR MEDICAL	REGISTRATOR MEDICAL PRINCIPAL		M	1,00	VASILIU MARIA	1299
27	BRANCARDIER	BRANCARDIER		M	1,00	BOBRIC GHEORGHE	2038
28	BRANCARDIER	BRANCARDIER		M	1,00	MANCUTA SERGIU	1898
29	BRANCARDIER	BRANCARDIER		M	1,00	AILINCAI GHEORGHE-DANIEL	2613
30	BRANCARDIER	BRANCARDIER		M	1,00	PETRARIU I.IOAN	2008
31	BRANCARDIER	BRANCARDIER		M	1,00	MANOLE DOREL	1987
32	BRANCARDIER	BRANCARDIER		M	1,00	PETRARIU N IOAN	2544
33	INFIRMIERA	INFIRMIERA		M	1,00	POST VACANT	
34	INFIRMIERA	INFIRMIERA		M	1,00	POST VACANT	
35	INGRIJITOARE	INGRIJITOARE		M	1,00	CALIN MARIA	2556
36	INGRIJITOARE	INGRIJITOARE		G	1,00	ROSCA IOANA	2666
37	INGRIJITOARE	INGRIJITOARE		M	1,00	VARVARA ELENA	2585
38	INGRIJITOARE	INGRIJITOARE		M	1,00	POST VACANT	
39	INGRIJITOARE	INGRIJITOARE		M	1,00	POST VACANT	
40	INGRIJITOARE	INGRIJITOARE		M	1,00	POST VACANT	
TOTAL POSTURI					40,00		

ACTIVITATE DE GARDA- MEDICI DIN AFARA UNITATII (*)

1	MEDIC	MEDIC PRIMAR		S	1,00	POST VACANT	
2	MEDIC	MEDIC PRIMAR		S	1,00	POST VACANT	
3	MEDIC	MEDIC PRIMAR		S	1,00	POST VACANT	
4	MEDIC	MEDIC SPECIALIST	PEDIATRIE	S	1,00	ALUCAI ECATERINA DELIA	2649
5	MEDIC	MEDIC SPECIALIST	CHIRURGIE	S	1,00	CIMPEANU CIPRIAN	2680
6	MEDIC	MEDIC SPECIALIST	A.T.I.	S	1,00	CRETIU LUCIANA	2686
7	MEDIC	MEDIC SPECIALIST		S	1,00	POST VACANT	
8	MEDIC	MEDIC SPECIALIST		S	1,00	POST VACANT	
9	MEDIC	MEDIC SPECIALIST		S	1,00	POST VACANT	
10	MEDIC	MEDIC SPECIALIST		S	1,00	POST VACANT	
TOTAL POSTURI					10,00		

(*) Nu se include in normativ si in numar total de posturi

FARMACIA

1	FARMACIST	FARMACIST	FARMACIE	S	1,00	POST VACANT	
2	FARMACIST	FARMACIST	FARMACIE	S	0,50	RADU-COJOCARIU ALEXANDRA	2672
3	FARMACIST	FARMACIST	FARMACIE	S	0,50	POST VACANT	
4	FARMACIST	FARMACIST REZIDENT AN I	FARMACIE	S	1,00	ZAHARIA RADU-VIRGIL	2718
5	ASISTENT MEDICAL	ASISTENT MEDICAL	FARMACIE	PL	1,00	ALBU ELENA FANICA	2328
6	ASISTENT MEDICAL	ASISTENT MEDICAL PRINCIPAL	FARMACIE	PL	1,00	GAUCA VASILE	2598
7	ASISTENT MEDICAL	ASISTENT MEDICAL	FARMACIE	PL	1,00	BARBULET LAURA	2540
8	ASISTENT MEDICAL	ASISTENT MEDICAL DEBUTANT	FARMACIE	PL	1,00	BUCUR MIHAELA	1763

9	ASISTENT MEDICAL	ASISTENT MEDICAL	FARMACIE	PL	1,00	POST VACANT	
10	INGRIJITOR	INGRIJITOARE		M	1,00	POST VACANT	
	TOTAL POSTURI				9,00		

LABORATOR ANALIZE MEDICALE

1	CHIMIST SEF LABORATOR grad II	CHIMIST PRINCIPAL		S	1,00	CIOMIRTAN TATIANA	2206
2	MEDIC	MED.PRIMAR- DOCTOR IN STIINTA	MEDICINA DE LABORATOR	S	1,00	GONTEA MIHAELA	2458
3	MEDIC	MEDIC SPECIALIST	MEDICINA DE LABORATOR	S	1,00	BOGHIAN ANDREIA	2640
4	BIOCHIMIST	BIOCHIMIST	BIOCHIMIE	S	1,00	LUCA IULIANA SIMONA	2693
5	BIOLOG	BIOLOG	BIOLOGIE	S	1,00	POST VACANT	
6	CHIMIST	CHIMIST	CHIMIE	S	1,00	POST VACANT	
7	ASISTENT MEDICAL	ASISTENT MEDICAL PRINCIPAL	LABORATOR	PL	1,00	COJOCARU ELENA	1391
8	ASISTENT MEDICAL	ASISTENT MEDICAL PRINCIPAL	LABORATOR	PL	1,00	MODRINGA ELENA	1230
9	ASISTENT MEDICAL	ASISTENT MEDICAL PRINCIPAL	LABORATOR	M	1,00	BERARIU ELENA	1110
10	ASISTENT MEDICAL	ASISTENT MEDICAL PRINCIPAL	LABORATOR	PL	1,00	VOCUREC MARIA	1460
11	ASISTENT MEDICAL	ASISTENT MEDICAL PRINCIPAL	LABORATOR	M	1,00	PURCEL ONORIU COSTEL	1723
12	ASISTENT MEDICAL	ASISTENT MEDICAL PRINCIPAL	LABORATOR	PL	1,00	GRUMAZESCU LAURA	2177
13	ASISTENT MEDICAL	ASISTENT MEDICAL PRINCIPAL	LABORATOR	PL	1,00	SAVA ELENA	2114
14	ASISTENT MEDICAL	ASISTENT MEDICAL PRINCIPAL	LABORATOR	PL	1,00	ISTRATE GABRIELA	2496
15	ASISTENT MEDICAL	ASISTENT MEDICAL	MEDICINA GENERALA	PL	1,00	SARPE DUMITRITA	2753
16	ASISTENT MEDICAL	ASISTENT MEDICAL	LABORATOR/ MEDICINA GENERALA	PL	1,00	POST VACANT	583
17	ASISTENT MEDICAL	ASISTENT MEDICAL	LABORATOR/ MEDICINA GENERALA	PL	1,00	POST VACANT	
18	REGISTRATOR MEDICAL	REGISTRATOR MEDICAL PRINCIPAL		M	1,00	COJOCARU CATALINA ECATERINA	1968
19	INGRIJITOR	INGRIJITOARE		M	1,00	VARLAN I.MARIA	1334
20	INGRIJITOR	INGRIJITOARE		M	1,00	IFTODE ANA	2474
	TOTAL POSTURI				20,00		

LABORATOR RADIOLOGIE SI IMAGISTICA MEDICALA

1	MEDIC SEF LABORATOR grad I	MEDIC PRIMAR	RADIOLOGIE SI IMAGISTICA MEDICALA	S	1,00	LUCACHI GABRIELA	2603
2	MEDIC	MEDIC SPECIALIST	RADIOLOGIE SI IMAGISTICA MEDICALA	S	1,00	PINTILIE CORINA	2657
3	MEDIC	MEDIC	RADIOLOGIE SI IMAGISTICA MEDICALA	S	1,00	POST VACANT	0
4	ASISTENT MEDICAL SEF	ASISTENT MEDICAL	MEDICINA GENERALA	PL	1,00	MOVILA MARIUS	2502
5	ASISTENT	ASISTENT MEDICAL PRINCIPAL	RADIOLOGIE	PL	1,00	SABADAC DINU	2467
6	ASISTENT MEDICAL	ASISTENT MEDICAL	MEDICINA GENERALA	PL	1,00	TRANDAFIR MIRELA-ECATERINA	2626
7	ASISTENT MEDICAL	ASISTENT MEDICAL	MEDICINA GENERALA	PL	1,00	MOVILA NICOLETA	2698
8	ASISTENT MEDICAL	ASISTENT MEDICAL	MEDICINA GENERALA	PL	1,00	POST VACANT	
9	INFIRMIERA	INFIRMIERA		M	1,00	OTEL ECATERINA	2599
	TOTAL POSTURI				9,00		

LABORATOR RECUPERARE, MEDICINA FIZICA SI BALNEOLOGIE

1	MEDIC	MEDIC PRIMAR	RECUPERARE,MED.FIZIC	S	1,00	GODRI ILONA	2597
2	MEDIC	MEDIC REZIDENT AN II	REABILITARE MEDICALA	S	1,00	UDREA LARISA CRISTINA	2713
3	ASISTENT MEDICAL	ASISTENT MEDICAL PRINCIPAL	MEDICINA GENERALA	PL	1,00	COZMA IULIANA-LARISA	2231
4	ASISTENT MEDICAL	ASISTENT MEDICAL PRINCIPAL	BALNEOFIZIOTERAPIE	PL	1,00	GUSAVAN ALINA	2209
5	ASISTENT MEDICAL	ASISTENT MEDICAL	BALNEOFIZIOTERAPIE/MEDICINA GEN	PL	1,00	POST VACANT	
6	INSTRUCTOR CFM	SORA MEDICALA	CULTURA FIZICA MEDICALA	M	1,00	CIMPEANU GEORGETA	1619
	TOTAL POSTURI				6,00		

COMPARTIMENT PREVENIRE INFECTII NOSOCOMIALE

1	MEDIC	MEDIC	EPIDEMIOLOGIE	S	0,50	POST VACANT	
---	-------	-------	---------------	---	------	-------------	--

2	MEDIC	MEDIC	EPIDEMIOLOGIE	S	1,00	POST VACANT	
3	ASISTENT MEDICAL	ASISTENT MEDICAL PRINCIPAL	IGIENA	PL	1,00	VASILIU FLORIN	2333
4	ASISTENT MEDICAL	ASISTENT MEDICAL PRINCIPAL	IGIENA	PL	1,00	POST VACANT	
5	AGENT DDD	AGENT DDD		M	1,00	BUCUR GHEORGHE	2583
	TOTAL POSTURI				4,50		

BIROU INFORMATICA, EVALUARE SI STATISTICA MEDICALA

1	SEF BIROU grad II	INGINER PROGRAMATOR IA		S	1,00	CEBERE ELENA	2169
2	ECONOMIST	ECONOMIST I		S	1,00	BOBRIC DANIELA	2057
3	ECONOMIST	ECONOMIST IA		S	1,00	IRIMIA IONELA	2605
4	ANALIST PROGR. AJUTOR	ANALIST PROGR. AJUTOR IA		PL	1,00	BALTATESCU DOREL	2471
5	STATISTICIAN MEDICAL	STATISTICIAN MEDICAL		M	1,00	POST VACANT	
6	REGISTRATOR MEDICAL	REGISTRATOR MEDICAL		M	1,00	POST VACANT	
	TOTAL POSTURI				6,00		

UNITATE TRANSFUZII SANGUINE

1	ASISTENT MEDICAL	ASISTENT MEDICAL PRINCIPAL	MEDICINA GENERALA	PL	1,00	LAZAR CRISTINA	2229
2	ASISTENT MEDICAL	ASISTENT MEDICAL PRINCIPAL	MEDICINA GENERALA	PL	1,00	STEFAN MARIA	1224
3	ASISTENT MEDICAL	ASISTENT MEDICAL PRINCIPAL	MEDICINA GENERALA	PL	1,00	ALBU IONICA-MANUELA	2483
4	ASISTENT MEDICAL	ASISTENT MEDICAL	MEDICINA GENERALA	PL	1,00	POST VACANT	
5	ASISTENT MEDICAL	ASISTENT MEDICAL	MEDICINA GENERALA	PL	1,00	POST VACANT	
	TOTAL POSTURI				5,00		

CABINET DIABET ZAHARAT, NUTRITIE SI BOLI METABOLICE

1	MEDIC	MEDIC SPECIALIST	DIABET,BOLI METABOLI	S	1,00	POST VACANT	
2	ASISTENT MEDICAL	ASISTENT MEDICAL	MEDICINA GENERALA	PL	1,00	NEGRU ALINA-CATALINA	2560
	TOTAL POSTURI				2,00		

CABINET BOLI INFECTIOASE

1	MEDIC	MEDIC SPECIALIST	BOLI INFECTIOASE	S	1,00	BIRLIBA MARIA MIHAELA	2658
2	ASISTENT MEDICAL	ASISTENT MEDICAL	MEDICINA GENERALA	PL	1,00	POST VACANT	
	TOTAL POSTURI				2,00		

CABINET ONCOLOGIE MEDICALA

1	MEDIC	MEDIC SPECIALIST	ONCOLOGIE MEDICALA	S	1,00	AFLOAREI ALINA GEORGIANA	2636
2	ASISTENT MEDICAL	ASISTENT MEDICAL	MEDICINA GENERALA	PL	1,00	POST VACANT	0
	TOTAL POSTURI				2,00		

FISIER INFORMATII

1	REGISTRATOR MEDICAL	REGISTRATOR MEDICAL PRINCIPAL		M	1,00	GAFITA ADRIANA	2631
2	INFIRMIERA	INFIRMIERA		M	1,00	CORNIA DANA	2548
3	INGRIJITOARE	INGRIJITOARE		M	1,00	ANITIE VOICA	1963
4	INGRIJITOARE	INGRIJITOARE		M	1,00	UNGUREANU LILIANA	2559
5	INGRIJITOARE	INGRIJITOARE		M	1,00	RUSU IRINA	2747
	TOTAL POSTURI				5,00		

FORMATIA NR.1 (EXPLOATARE SI INTRETINERE UTILAJE, INSTALATII)

1	SEF FORMATIE grad I	INGINER IA	S	0,50	RUSU CONSTANTIN	1993
2	INGINER	INGINER	S	0,50	POST VACANT	
CENTRALA TERMICA						
3	FOCHIST	MUNCITOR CALIFICAT I CAT.6	M	1,00	IONITA DANUT	2300
4	FOCHIST	MUNCITOR CALIFICAT I CAT.6	M	1,00	ROSU GHEORGHE	2248
5	FOCHIST	MUNCITOR CALIFICAT IV CAT.1	M	1,00	VICOVANU GHEORGHE	2566
6	FOCHIST	MUNCITOR CALIFICAT IV CAT.1	M	1,00	DASCALU LAURENTIU-MARIN	2717
7	FOCHIST	MUNCITOR CALIFICAT IV CAT.1	M	1,00	POST VACANT	
ATELIER ELECTRIC						
8	ELECTRICIAN	MUNCITOR CALIFICAT I CAT.6	M	1,00	OGLINZANU CONSTANTIN	2292
9	ELECTRICIAN	MUNCITOR CALIFICAT I CAT.6	M	1,00	SORLESCU GHEORGHE	2417
10	ELECTRICIAN	MUNCITOR CALIFICAT I CAT.6	M	1,00	ILIES MIHAI	2459
11	ELECTRICIAN	MUNCITOR CALIFICAT I CAT.6	M	1,00	POST VACANT	
12	ELECTRICIAN	MUNCITOR CALIFICAT I CAT.6	M	1,00	POST VACANT	
TOTAL POSTURI				11,00		

FORMATIA NR.2 (INTRETINERE CLADIRI, INSTALATII APA, CURTE, DESERVIRE)

INTRETINERE CLADIRI						
1	SEF FORMATIE INTRETINERE grad II	INGINER IA	S	1,00	POPESCU GABRIEL	2635
2	LACATUS MECANIC	MUNCITOR CALIFICAT II CAT.3	M	1,00	VASILIU IULIAN IOAN	2350
3	INSTALATOR	MUNCITOR CALIFICAT II CAT.4	M	1,00	COROPCA VASILE	2304
4	INSTALATOR	MUNCITOR CALIFICAT IV CAT.1	M	1,00	CARLAN VALENTIN COSTEL	2742
5	TIMPLAR	MUNCITOR CALIFICAT II CAT.3	M	1,00	ANCUTA FLORIN	2741
6	ZIDAR	MUNCITOR CALIFICAT II CAT.4	M	1,00	MANOLE CRISTINEL	2316
7	ZIDAR	MUNCITOR CALIFICAT III CAT.2	M	1,00	USTUROI CONSTANTIN	2518
8	ZIDAR	MUNCITOR CALIFICAT III CAT.2	M	1,00	PAVEL IOAN	2554
10	ZIDAR	MUNCITOR CALIFICAT III CAT.2	M	0,50	TATARU EUGEN	2712
10	ZIDAR	MUNCITOR CALIFICAT III CAT.2	M	0,50	POST VACANT	
11	ZIDAR	MUNCITOR CALIFICAT IV CAT.1	M	1,00	LEAHU MARCEL	2567
CENTRALA TELEFONICA						
12	TELEFONIST	MUNCITOR CALIFICAT III (TELEFONIST)	M	1,00	ANDONI EUFROSINA	1267
13	TELEFONIST	MUNCITOR CALIFICAT (TELEFONIST)	M	1,00	POST VACANT	
14	TELEFONIST	MUNCITOR CALIFICAT (TELEFONIST)	M	1,00	POST VACANT	
INTRETINERE CURTE-SPATII VERZI						
15	MUNCITOR NECALIFICAT	MUNCITOR NECALIFICAT I	M	1,00	LUPU COSTICA	2749
16	MUNCITOR NECALIFICAT	MUNCITOR NECALIFICAT I	M	1,00	COTFASA ELENA	2604
17	MUNCITOR NECALIFICAT	MUNCITOR NECALIFICAT I	M	1,00	POST VACANT	
ATELIER LENJERIE						
18	LENJEREASA	MUNCITOR CALIFICAT II CAT.3	M	1,00	BUMBEA VIRGINIA	2402
BLOC ALIMENTAR						
19	ASISTENT	ASISTENT MEDICAL PRINCIPAL DIETETICA	PL	1,00	TARHON PETRONICA	1399
20	ASISTENT	ASISTENT MEDICAL PRINCIPAL DIETETICA	M	1,00	APETREI ANA	693
21	BUCATAR	MUNCITOR I NIVEL III	M	1,00	SARBATOARE VIRGINICA	2429
22	BUCATAR	MUNCITOR I NIVEL III	M	1,00	SAVA ELENA	2428
23	BUCATAR	MUNCITOR I NIVEL III	M	1,00	AGROSOAE EUGENIA	2578
24	BUCATAR	MUNCITOR III NIVEL II	M	1,00	GAVRILOAE TINCA	2327
25	BUCATAR	MUNCITOR III NIVEL II	M	1,00	HARJA NICOLETA	1998
26	BUCATAR	MUNCITOR III NIVEL II	M	1,00	SANDU ADRIANA	2591
27	BUCATAR	MUNCITOR III NIVEL II	M	1,00	APOSTOL ANA	2610
28	BUCATAR	MUNCITOR III NIVEL II	M	1,00	VASILIU ELENA-ALINA	2746

SPALATORIE SEMIMECANICA

29	SPALATOREASA CU GESTIUNE	SPALATOREASA		M	1,00	MARIAN ELENA	1962
30	SPALATOREASA	SPALATOREASA		M	1,00	COSOFRET GH.ELENA	2068
31	SPALATOREASA	SPALATOREASA		M	1,00	HUMULESCU LILIANA	1949
32	SPALATOREASA	SPALATOREASA		M	1,00	CRETU RODICA	1790
33	SPALATOREASA	SPALATOREASA		M	1,00	DIACONU DOINITA	2421
34	SPALATOREASA	SPALATOREASA		M	1,00	LUPU MIHAELA	2746

TOTAL POSTURI

33,00

AMBULATORIUL INTEGRAT AL SPITALULUI

CABINET MEDICINA INTERNA

1	ASISTENT MEDICAL	ASISTENT MEDICAL PRINCIPAL	MEDICINA GENERALA	PL	1,00	OBREJA LIDIA	2629
---	------------------	----------------------------	-------------------	----	------	--------------	------

CABINET CARDIOLOGIE

2	ASISTENT MEDICAL	ASISTENT MEDICAL PRINCIPAL	MEDICINA GENERALA	PL	1,00	TUDOSIA COSOFRET EUGENIA	2575
---	------------------	----------------------------	-------------------	----	------	--------------------------	------

CABINET CHIRURGIE GENERALA

3	ASISTENT MEDICAL	ASISTENT MEDICAL	MEDICINA GENERALA	PL	1,00	PREDA MARIA	2752
---	------------------	------------------	-------------------	----	------	-------------	------

CABINET OBSTETRICA-GINECOLOGIE

4	ASISTENT MEDICAL	ASISTENT MEDICAL PRINCIPAL		PL	1,00	POST VACANT	
---	------------------	----------------------------	--	----	------	-------------	--

CABINET PEDIATRIE

5	ASISTENT MEDICAL	ASISTENT MEDICAL	MEDICINA GENERALA	PL	1,00	MIHAILUC MARIANA LOREDANA	2738
---	------------------	------------------	-------------------	----	------	---------------------------	------

CABINET REUMATOLOGIE

6	ASISTENT MEDICAL	ASISTENT MEDICAL		PL	1,00	POST VACANT	
---	------------------	------------------	--	----	------	-------------	--

CABINET NEUROLOGIE

7	MEDIC	MEDIC SPECIALIST	NEUROLOGIE	S	1,00	POST VACANT	
---	-------	------------------	------------	---	------	-------------	--

CABINET PNEUMOLOGIE

8	MEDIC	MEDIC SPECIALIST	PNEUMOLOGIE	S	0,50	POST VACANT	
---	-------	------------------	-------------	---	------	-------------	--

CABINET ENDOCRINOLOGIE

9	MEDIC	SPECIALIST	ENDOCRINOLOGIE	S	1,00	CANEPA MIHAELA	2637
10	ASISTENT MEDICAL	ASISTENT MEDICAL		PL	1,00	POST VACANT	

CABINET GASTROENTEROLOGIE

11	ASISTENT MEDICAL	ASISTENT MEDICAL		PL	1,00	POST VACANT	
----	------------------	------------------	--	----	------	-------------	--

CABINET ORTOPEDIE SI TRAUMATOL

12	MEDIC	MEDIC SPECIALIST	ORTOPEDIE SI TRAUMATOLOGIE	S	1,00	POST VACANT	
----	-------	------------------	----------------------------	---	------	-------------	--

TOTAL POSTURI

11,50

DISPENSAR TBC

1	MEDIC	MEDIC PRIMAR	PNEUMOFTIZIOLOGIE	S	1,00	PUIU TATIANA	2155
2	MEDIC	MEDIC PRIMAR	PNEUMOLOGIE	S	1,00	TEREJA CLAUDIA IULIANA	2648
3	ASISTENT MEDICAL	ASISTENT MEDICAL PRINCIPAL	MEDICINA GENERALA	PL	1,00	CHIRILA LILIANA	1776
4	ASISTENT MEDICAL	ASISTENT MEDICAL	MEDICINA GENERALA	PL	1,00	GHIDOARCA PETRONIA	1955
5	ASISTENT MEDICAL	ASISTENT MEDICAL DEBUTANT	MEDICINA GENERALA	PL	1,00	IRIMIA MARIA	1811
6	SORA MEDICALA	SORA MEDICALA PRINCIPALA	MEDICINA GENERALA	M	1,00	ASAVEI ELENA	780
7	INGRIJITOARE	INGRIJITOARE		M	1,00	SACALEANU DOMNICA	2542

TOTAL POSTURI

7,00

CABINET PLANIFICARE FAMILIALA

1	MEDIC	MEDIC		S	1,00	POST VACANT	
2	ASISTENT MEDICAL	ASISTENT MEDICAL	MEDICINA INTERNA	PL	1,00	STAN ALINA MIHAELA	2437
	TOTAL POSTURI				2,00		

MANAGER
Dr. Antohi Mihaela

DIRECTOR FINANCIAR-CONTABILITATE
Ec. Humulescu Doina Ionica

SEF BIROU RUONS
Ec. Olteanu Magdalena

CENTRALIZATORUL POSTURILOR PROPUSE PENTRU STATUL DE FUNCTII PE ANUL 2015

LOCURI DE MUNCA	NR. POSTURI CF. NORMATIV OMS 1224/2010	NR. POSTURI PROPUSE	NR. POSTUR OCUPATE din care:	MEDICI SI ALT PERS SUPER.	PERS. MEDIU SANITAR	PERS. AUXILIAR	ALT PERSONAL	PERS. TESA	MUNCITORI SI DESERVIRE
ASIGURARI DE SANATATE									
PERSONAL CONDUCERE	3	3	3				3		
CAPELA SPITAL	1	1	1				1		
Total personal conducere si alte categorii	4	4	4	0	0	0	4	0	0
BIROU RUNOS SI MANAGEMENTUL CALIT. SERV. MEDIC	7	7	6					6	
BIROU FINANCIAR-CONTABILITATE SI ADMINISTRATIV	8	8	7					7	
COMPARTIMENT APROVIZIONARE	2	2	1					1	
COMPARTIMENT ACHIZITII PUBLICE SI CONTRACTARE	1	1	1					1	
COMPARTIMENTUL JURIDIC	1	1	1					1	
COMPART. SECURIT. MUNCII,PSI,PROT. CIVILA SI SIT. DE URGE	1	1	1					1	
Total personal din aparatul functional	20	20	17	0	0	0	0	17	0
SECTIA MEDICINA INTERNA	44	36	29	3	15	11			
SECTIA OG	40	38	31	4	17	10			
COMPARTIMENT NEONATOLOGIE	43	19	17	1	10	6			
SECTIA CHIRURGIE GENERALA	50	37	27,5	5,5	13	9			
SECTIA BOLI INFECTIOASE	27	23	20	1	10	9			
SECTIA RADIOLOGIE	24	23	21	3	9	9			
SECTIA REUMATOLOGIE	21	17	13	1	7	5			
SECTIA PEDIATRIE	34	28	26	5	11	9	1		
COMPART. PRIMIRE URGENTE	53	40	32	2	21	9			
FARMACIA	12	10	5,5	1,5	4				
LABORATOR ANALIZE MEDICALE	25	20	16	4	10	2			
LABORATOR RADIOLOGIE SI IMAGISTICA MEDICALA	10	9	7	2	4	1			
LABORATOR RECUPERARE,MED.FIZ. SI BALNEO.	8	6	5	2	3				
COMPART. DE PREVENIRE SI CONTROL AL INFECTIILOR	5,5	4,5	2		1	1			
BIROUL INFORMATICA, EVALUARE SI STATISTICA MED	6	6	4					4	
UNITATE DE TRANSFUZII SANGUINE	5	5	3		3				
CABINET DIABET ZAH.,NUTRITIE SI BOLI METABOLICE	2	2	1		1				
CABINET BOLI INFECTIOASE	2	2	1	1					
CABINET ONCOLOGIE MEDICALA	2	2	1	1					
FISIER, INFORMATII, SECRETARIAT,CURATENIE AMBUL	6	6	5		1	4			
FORMATIA NR. 1 (EXPLOATARE SI INTRETINERE UTILAJE, INSTALATII)	1	1	0,5					0,5	
CENTRALA TERMICA	5	5	4						4
ATELIER ELECTRIC+GRUP ELECTROGEN	5	5	3						3
FORMATIA NR. 2 (INTRETINERE CLADIRI, INSTALATII APA, CURTE, DESERVIRE)	1	1	1					1	
ACTIVITATE INTRETINERE CLADIRI	10	9	8,5						8,5
ACTIVITATE INTRETINERE CURTE	3	3	2						2
CENTRALA TELEFONICA	5	3	1						1
ATELIER LENJERIE	1	1	1						1
BLOC ALIMENTAR + DIETETICA	10	10	9,5		2				7,5
SPALATORIE	6	6	6			6			
LIFTURI-LIFTIER	5	0	0						
GARDEROBA-GARDEROBIER	5	0	0						
Ambulatoriul integrat			0						
CABINET MEDICINA INTERNA	1	1	1		1				
CABINET RADIOLOGIE	1	1	1		1				
CABINET CHIRURGIE GENERALA	1	1	1		1				
CABINET OBSTETRICA -GINECOLOGIE	1	1	0						
CABINET PEDIATRIE	1	1	1		1				
CABINET REUMATOLOGIE	1	1	0						
CABINET NEUROLOGIE	2	1	0						
CABINET PNEUMOLOGIE	2	0,50	0						
CABINET ENDOCRINOLOGIE	2	2	1	1					
CABINET GASTROENTEROLOGIE	1	1	0						
CABINET ORTOPEDIE SI TRAUMATOLOGIE	2	1	0						
TOTAL ASIGURARI	515,5	413	329,5	38	146	91	5	22,5	27
TRANSFERURI BUGET DE STAT									
CABINET PLANIFICARE FAMILIALA	2	2	1		1				
DISPENSAR TBC	7	7	7	2	4	1			
TOTAL TRANSFERURI	9	9	8	2	5	1	0	0	0
TOTAL GENERAL	524,50	422,00	337,50	40,00	151,00	92,00	5,00	22,50	27,00

MANAGER
Dr. Antohi Mihaela

DIRECTOR FINANCIAR-CONTABILITATE
Ec. Humulescu Doina Ionica

SEF BIROU RUONS
Ec. Olteanu Magdalena

SITUATIA CENTRALIZATOARE A NUMARULUI DE POSTURI NORMATE LA DATA DE 01.05.2015

STRUCTURA UNITATI	TOTAL NR. POSTURI				MEDICI SI ALT PERSONAL SUPERIOR				PERS. MEDIU				PERS. AUXILIAR SI ALT PERS.				PERS. TESA + CONDUCERE SI ALT PERS.				MUNCITORI SI DESERVIRE			
	NORMATE	PROPUSE	OCUPATE	VACANTE	NORMATE	PROPUSE	OCUPATE	VACANTE	NORMATE	PROPUSE	OCUPATE	VACANTE	NORMATE	PROPUSE	OCUPATE	VACANTE	NORMATE	PROPUSE	OCUPATE	VACANTE	NORMATE	PROPUSE	OCUPATE	VACANTE
CONF. ORD. MSP NR. 793/2010																								
ASIGURARI DE SANATATE	SPITAL (260 paturi)																							
PERSONAL CONDUCERE	3	3	3	0													3	3	3					
CAPELA SPITAL	1	1	1	0													1	1	1					
BIROUL RUNDI SI MANAG. CALIT. SERV. MED.	7	7	6	1	1	1		1									6	6	6					
BIROUL FINANCIAR-CONTABILITATE SI ADMINISTRA	8	8	7	1													8	8	7	1				
COMPARTIMENT APROVIZIONARE	2	2	1	1													2	2	1	1				
COMPARTIMENT ACHIZ. PUBLICE SI CONTRACTARE	1	1	1	0													1	1	1					
COMPARTIMENTUL JURIDIC	1	1	1	0													1	1	1					
COMPART. SECURIT. MUNCII, PSI, PROT CIVILA SI S	1	1	1	0													1	1	1					
SECTIA MEDICINA INTERNA (55 paturi) din care:	44	36	29	7	7	5	3	2	24	18	15	3	13	13	11	2								
Compartim.gastroenterologie (10 paturi)					2	1		1	5	4	4													
Compartim.diabet, boli de nutritie si metabolism(10 paturi)					1				5	4	1													
SECTIA OB (35 paturi) din care:	40	38	31	6	5	6	4	1	20	20	17	3	15	12	10	2								
Compartim. A.T.I.					1	1	1		5	4	4	1	5											
Sala de operatii + sterilizare									5	4	3	1												
COMPARTIMENT NEONATOLOGIE (20 paturi)	43	19	17	2	4	2	1	1	32	10	10		7	7	6	1								
SECTIA CHIRURGIE GENERALA (30 paturi) din car	50	37	27,5	7,5	8	8	5,5	2,5	19	19	13	4	23	10	9	1								
Compartim. A.T.I.					3	3	1,5		5	5	5		5											
Bloc operator+ sterilizare									5	5	4	1	4	1	1									
SECTIA BOLI INFECTIOASE (25 paturi)	27	23	20	3	2	2	1	1	10	10	10		15	11	9	2								
SECTIA CARDIOLOGIE(30 paturi)	24	23	21	2	4	4	3	1	9	9	9		11	10	9	1								
SECTIA REUMATOLOGIE (25 paturi)	20	16	13	3	3	2	1	1	9	8	7	1	8	6	5	1								
SECTIA PEDIATRIE (40 paturi)	35	30	26	4	6	6	5	1	14	13	11	2	14	10	9	1	1	1	1					
COMPART. PRIMIRE URGENTE	53	40	32	8	6	5	2	3	24	21	21		23	14	9	5								
FARMACIA	12	10	5,5	4,5	3	3	1,5	1,5	6	6	4	2	3	1		1								
LABORATOR ANALIZE MEDICALE	25	20	16	4	9	6	4	2	13	12	10	2	3	2	2									
LABORATOR RADIOLOGIE SI IMAGISTICA MEDICALA	10	9	7	2	3	3	2	1	6	5	4	1	1	1	1									
LABORATOR RECUPERARE.MED.FIZ SI BALNEO.	8	6	5	1	2	2	2		5	4	3	1	1											
COMP. PREVENIRE SI CONTROL INFECT. NOZOCOMIA	5,5	4,5	2	2,5	1,5	1,5		1,5	2	2	1	1	2	1	1									
BIROUL INFORMATICA, EVALUARE SI STATISTICA M	6	6	4	2					2	2		2					4	4	4					
UNITATE DE TRANSFUZI SANGUINE	5	5	3	2					5	5	3	2												
CABINET DIABET ZAH..NUTRITIE SI BOLI METABOLIC	2	2	1	1	1	1		1	1	1	1													
CABINET BOLI INFECTIOASE	2	2	1	1	1	1	1		1	1		1												
CABINET ONCOLOGIE MEDICALA	2	2	1	1	1	1	1		1	1		1												
FISIER. INFORMATII. SECRETARIAT	6	5	5	1					1	1	1	1	5	4	4									
FORM. NR.1 (EXPL.SI INTRET. UTILAJE SI INSTALATII	1	1	0,5	0,5													1	1	0,5	0,5				
CENTRALA TERMICA	5	5	4	1																	5	5	4	1
ATELIER ELECTRIC+GRUP ELECTROGEN	5	5	3	2																	5	5	3	2
FORM. NR.2 (INTRET. CLADIRI . INSTAL.APA. CURTE	1	1	1	0													1	1	1					
INTRETINERE CLADIRI	10	9	8,5	0,5																	10	9	8,5	0,5

INTRETINERE CURTE	3	3	2	0																3	3	2		
CENTRALA TELEFONICA	5	3	1	2																5	3	1	2	
ATELIER LENJERIE	1	1	1	0																1	1	1		
BLOC ALIMENTAR	10	10	9,5	0,5					2	2	2									8	8	7,5	0,5	
SPALATORIE	6	6	6	0									6	6	6									
LIFTURI-LIFTIER	5	0	0	0																5				
GARDEROBA-GARDEROBIER	5	0	0	0																5				
TOTAL SPITAL	500,5	401,5	324,5	74	67,5	59,5	37	21,5	206	170	142	27	150	108	91	17	30	30	27,5	2,5	47	34	27	6

STRUCTURA UNITATI CONF. ORD. MSP NR. 793/2010	TOTAL NR. POSTURI				MEDICI SI ALT PERSONAL SUPERIOR				PERS. MEDIU				PERS. AUXILIAR				PERS. TESA				MUNCITORI SI DESERVIRE			
	NORMATE	PROPUSE	OCUPATE	VACANTE	NORMATE	PROPUSE	OCUPATE	VACANTE	NORMATE	PROPUSE	OCUPATE	VACANTE	NORMATE	PROPUSE	OCUPATE	VACANTE	NORMATE	PROPUSE	OCUPATE	VACANTE	NORMATE	PROPUSE	OCUPATE	VACANTE

AMBULATORIUL INTEGRAT AL SPITALULUI

CABINET MEDICINA INTERNA	1	1	1	0					1	1	1													
CABINET CARDIOLOGIE	1	1	1	0					1	1	1													
CABINET CHIRURGIE GENERALA	1	1	0	0					1	1	1													
CABINET OBSTETRICA -GINECOLOGIE	1	1	0	1					1	1		1												
CABINET PEDIATRIE	1	1	1	0					1	1	1													
CABINET REUMATOLOGIE	1	1	0	1					1	1		1												
CABINET NEUROLOGIE	2	1	0	1	1	1		1	1															
CABINET PNEUMOLOGIE	2	0,5	0	0,5	1	0,5		0,5	1															
CABINET ENDOCRINOLOGIE	2	2	1	1	1	1	1		1	1		1												
CABINET GASTROENTEROLOGIE	1	1	0	1					1	1		1												
CABINET ORTOPEDIE SI TRAUMATOLOGIE	2	1	0	1	1	1		1	1															
TOTAL AMBULATORIU	15	11,5	5	6,5	4	3,5	1	2,5	11	8	4	4	0	0	0	0	0	0	0	0	0	0	0	0

TOTAL ASIGURARI	515,5	413	329,5	80,5	71,5	63	38	24	217	178	146	31	150	108	91	17	30	30	27,5	2,5	47	34	27	6
------------------------	--------------	------------	--------------	-------------	-------------	-----------	-----------	-----------	------------	------------	------------	-----------	------------	------------	-----------	-----------	-----------	-----------	-------------	------------	-----------	-----------	-----------	----------

TRANSFERURI BUGET DE STAT

DISPENSAR TBC	7	7	7	0	2	2	2		4	4	4		1	1	1									
CABINET PLANIFICARE FAMILIALA	2	2	1	1	1	1		1	1	1	1													
TOTAL TRANSFERURI	9	9	8	1	3	3	2	1	5	5	5	0	1	1	1	0	0	0	0	0	0	0	0	0

TOTAL GENERAL	524,5	422,0	337,5	81,5	74,5	66,0	40,0	25,0	222,0	183,0	151,0	31,0	151,0	109,0	92,0	17,0	30,0	30,0	27,5	2,5	47,0	34,0	27,0	6,0
----------------------	--------------	--------------	--------------	-------------	-------------	-------------	-------------	-------------	--------------	--------------	--------------	-------------	--------------	--------------	-------------	-------------	-------------	-------------	-------------	------------	-------------	-------------	-------------	------------

MANAGER
Dr. Antohi Mihaela

DIRECTOR FINANCIAR-CONTABILITATE
Ec. Humulescu Doina Ionica

SEF BIROU RUONS
Ec. Olteanu Magdalena